



# **Cost of Solar to Pennsylvania Ratepayers**

**Prepared for the Senate Consumer Protection and  
Professional Licensure Committee**

# DLC at a Glance

## Who We Are

For more than a century, Duquesne Light Company has been working around the clock to deliver a safe and reliable supply of electricity to over 600,000 customers in Allegheny and Beaver counties.

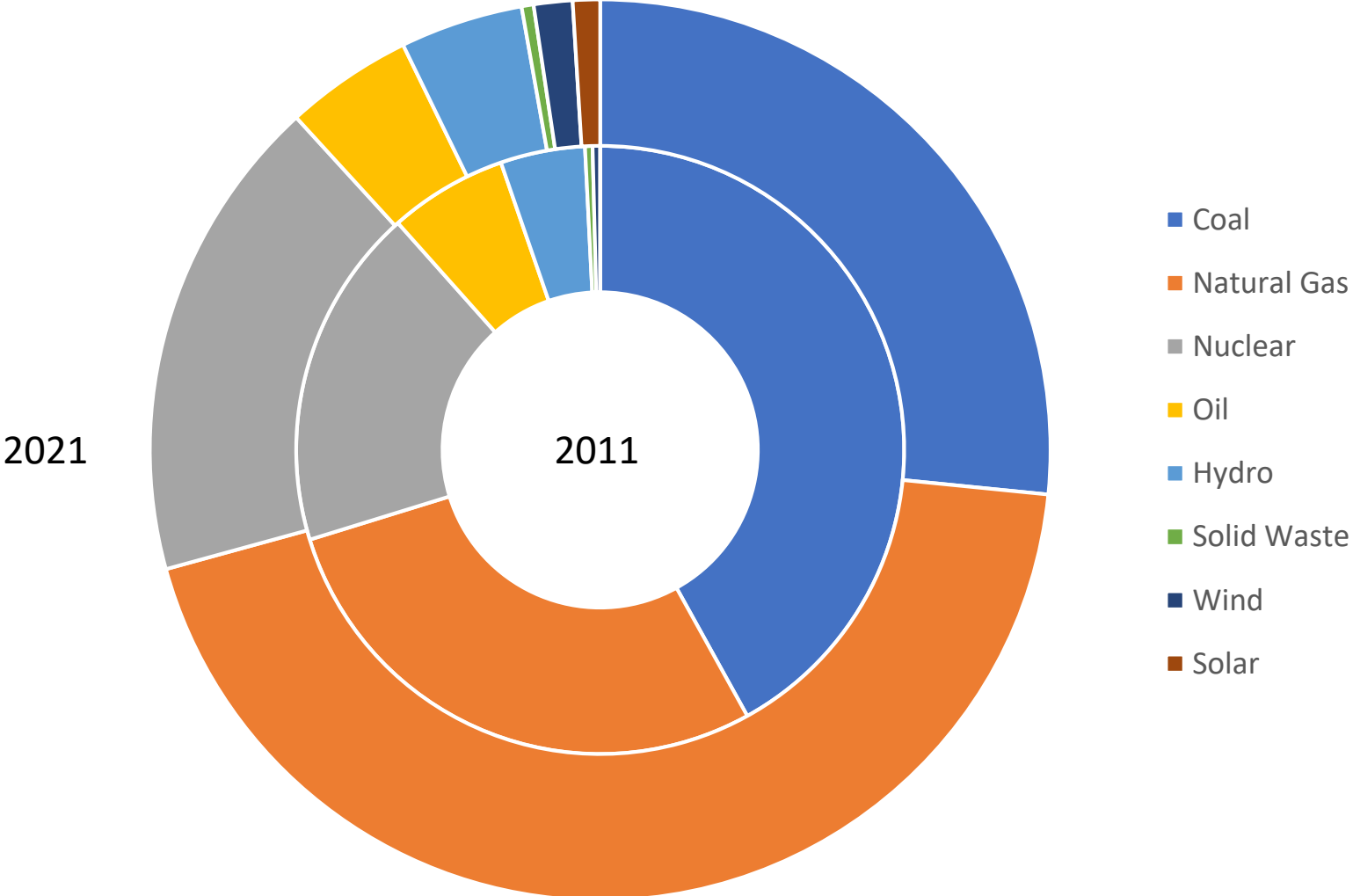
In our 817-square-mile service territory, we manage:

- 690 miles of high voltage transmission lines
- 7,200 miles of distribution circuit lines
- 250,000 poles
- 108,000 transformers
- 403 substations



# PJM Installed Capacity by Fuel Source 2011 vs. 2021

MW Installed



# PJM Installed Capacity by Fuel Source 2011 vs. 2021

MW and Percentage

Installed Capacity by Fuel Type (MW)									
	Installed Capacity	Coal	Natural Gas	Nuclear	Oil	Hydro	Solid Waste	Wind	Solar
2011 [1]	178,846	75,115	50,613	32,550	11,267	8,048	715	715	-
2021 [2]	186,868	49,670	82,510	32,656	8,558	8,249	804	2,597	1,824
Delta	8,022	(25,445)	31,897	106	(2,709)	201	89	1,882	1,824

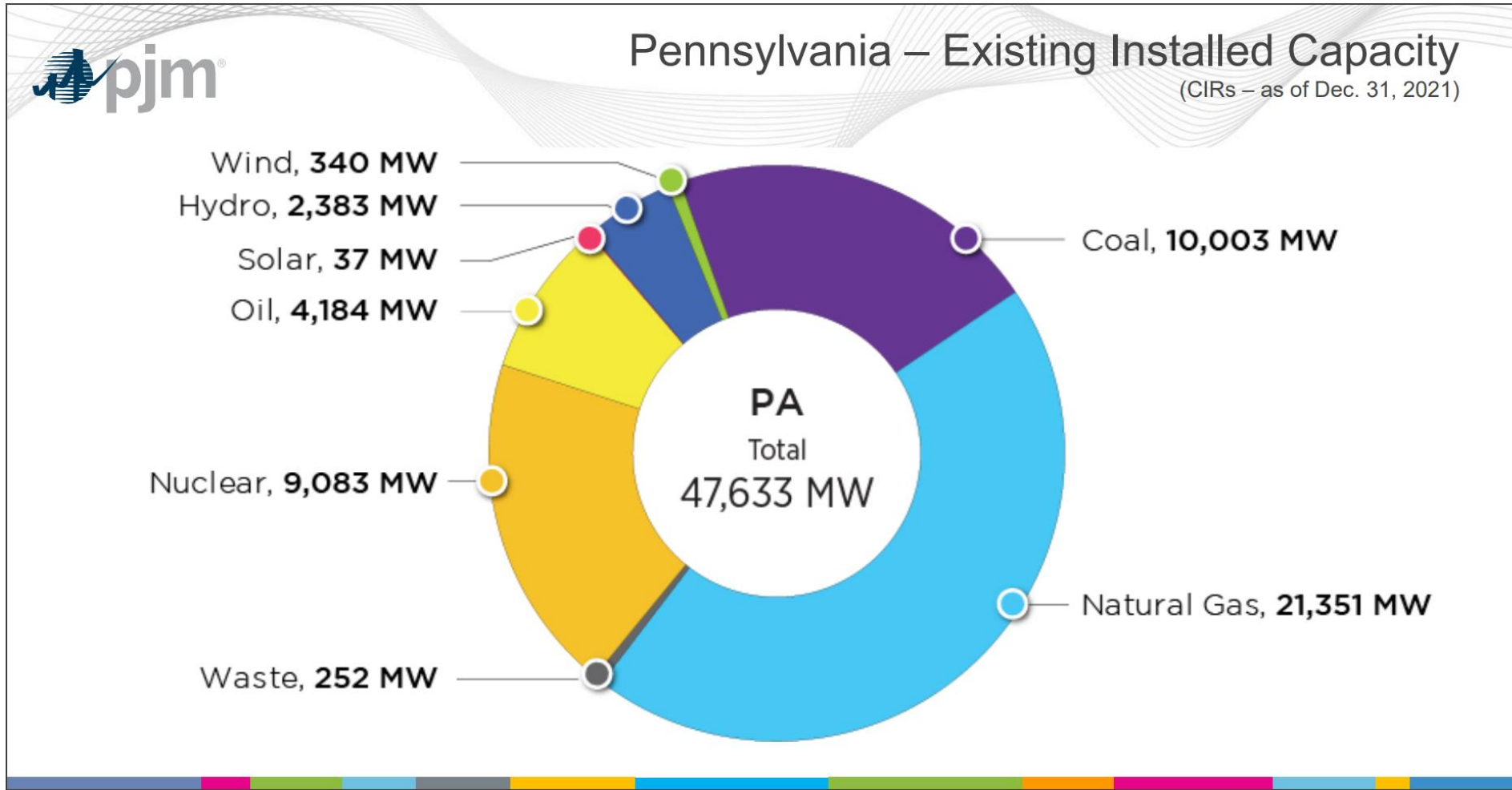
Installed Capacity by Fuel Type (%)									
	Total	Coal	Natural Gas	Nuclear	Oil	Hydro	Solid Waste	Wind	Solar
2011 [1]	100%	42%	28%	18%	6%	5%	0%	0%	0%
2021 [2]	100%	27%	44%	17%	5%	4%	0%	1%	1%
Delta	0%	-15%	16%	-1%	-2%	0%	0%	1%	1%

[1] – Source PJM SOM 2011

[2] – Source PJM RTEP Report 2021

# Pennsylvania-Existing Installed Capacity

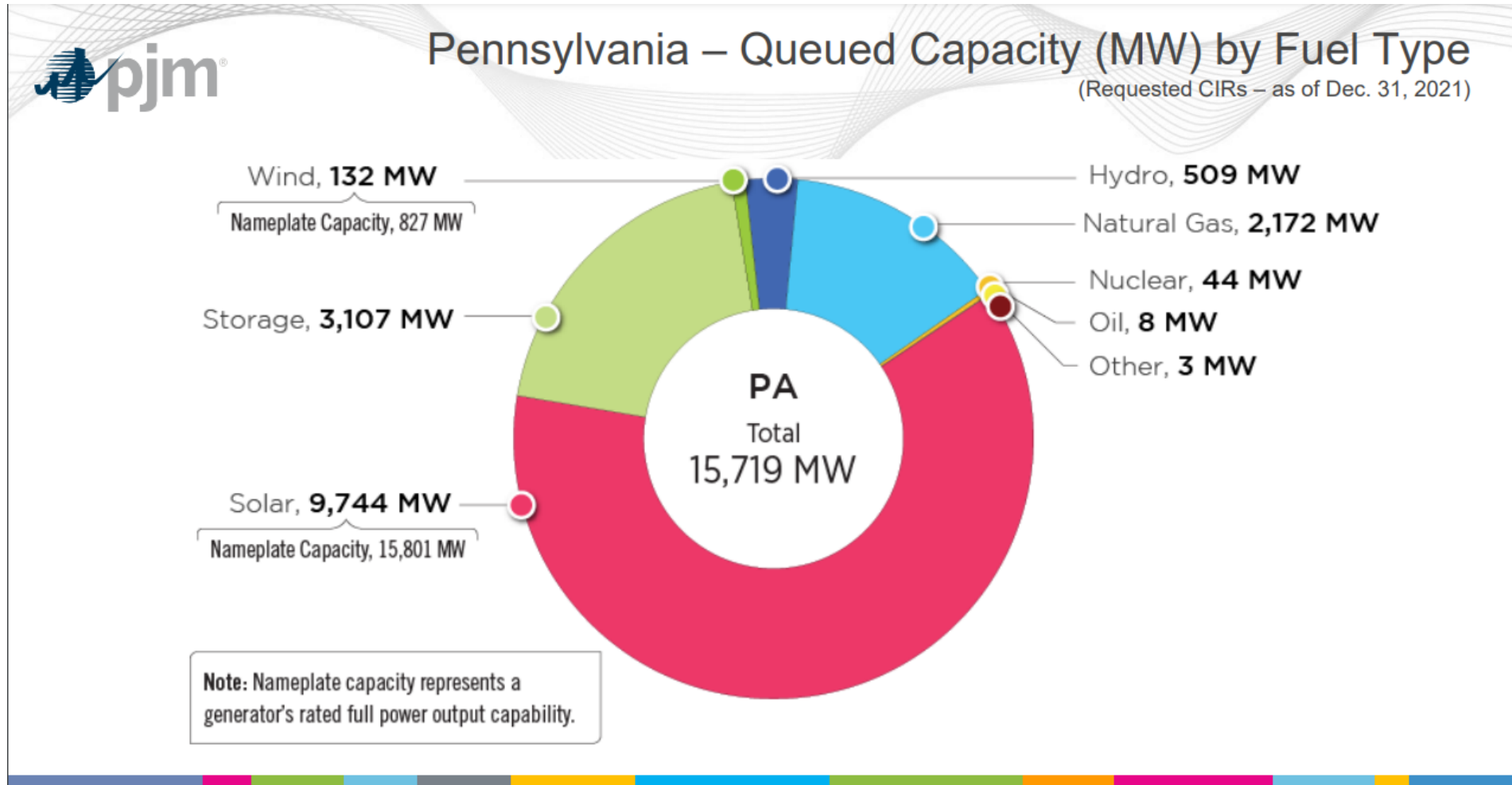
As of December 2021



<https://www.pjm.com/-/media/library/reports-notice/state-specific-reports/2021/2021-pennsylvania-state-infrastructure-report.ashx>

# Pennsylvania-Queued Capacity by Fuel Type

As of December 2021

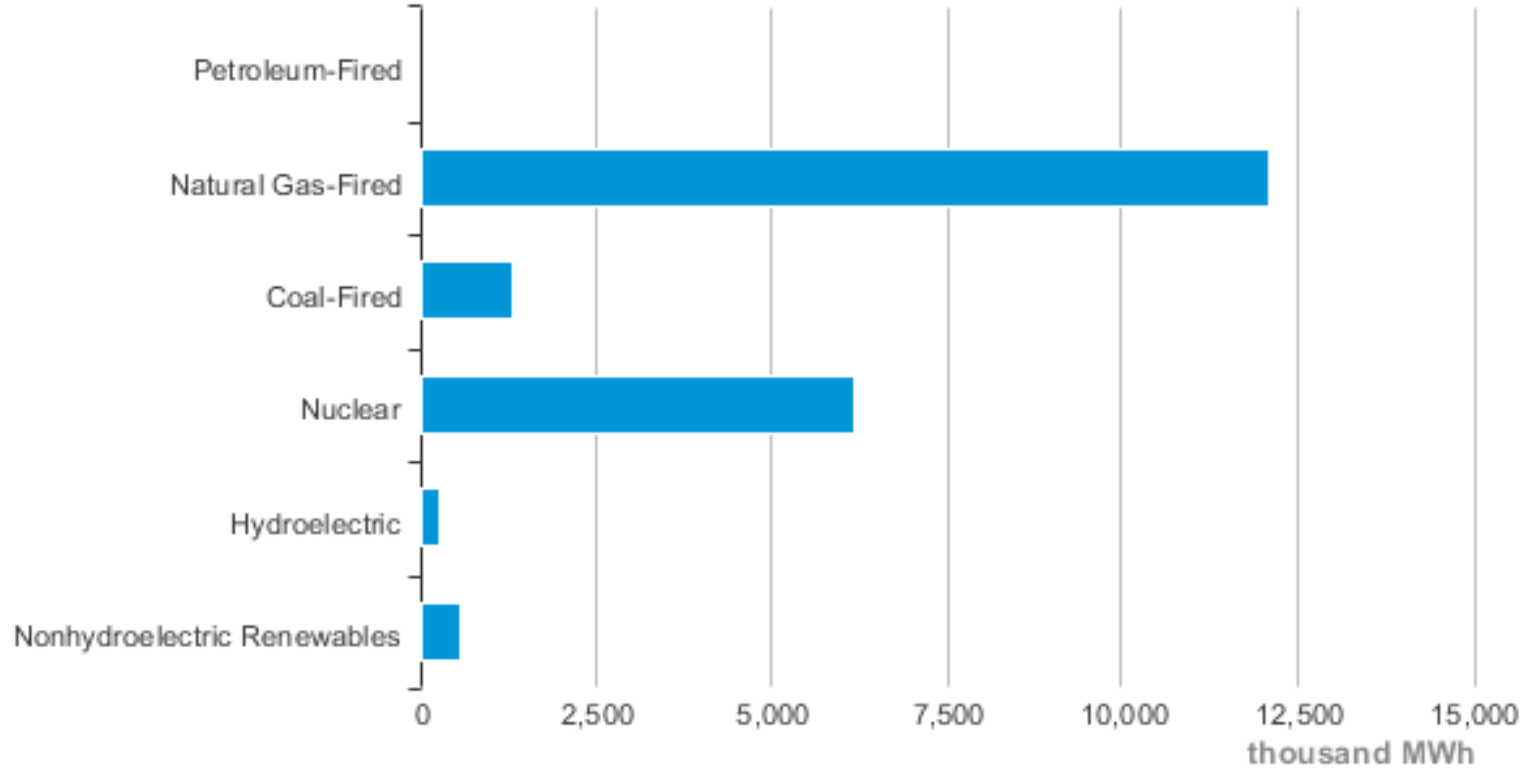


<https://www.pjm.com/-/media/library/reports-notice/state-specific-reports/2021/2021-pennsylvania-state-infrastructure-report.ashx>

# PA Net Electricity Generation

By Source, March 2023

## Pennsylvania Net Electricity Generation by Source, Mar. 2023



Source: Energy Information Administration, Electric Power Monthly



# Questions??